

Illustration 4.12b Fixed Gas Sampling System (2/3)

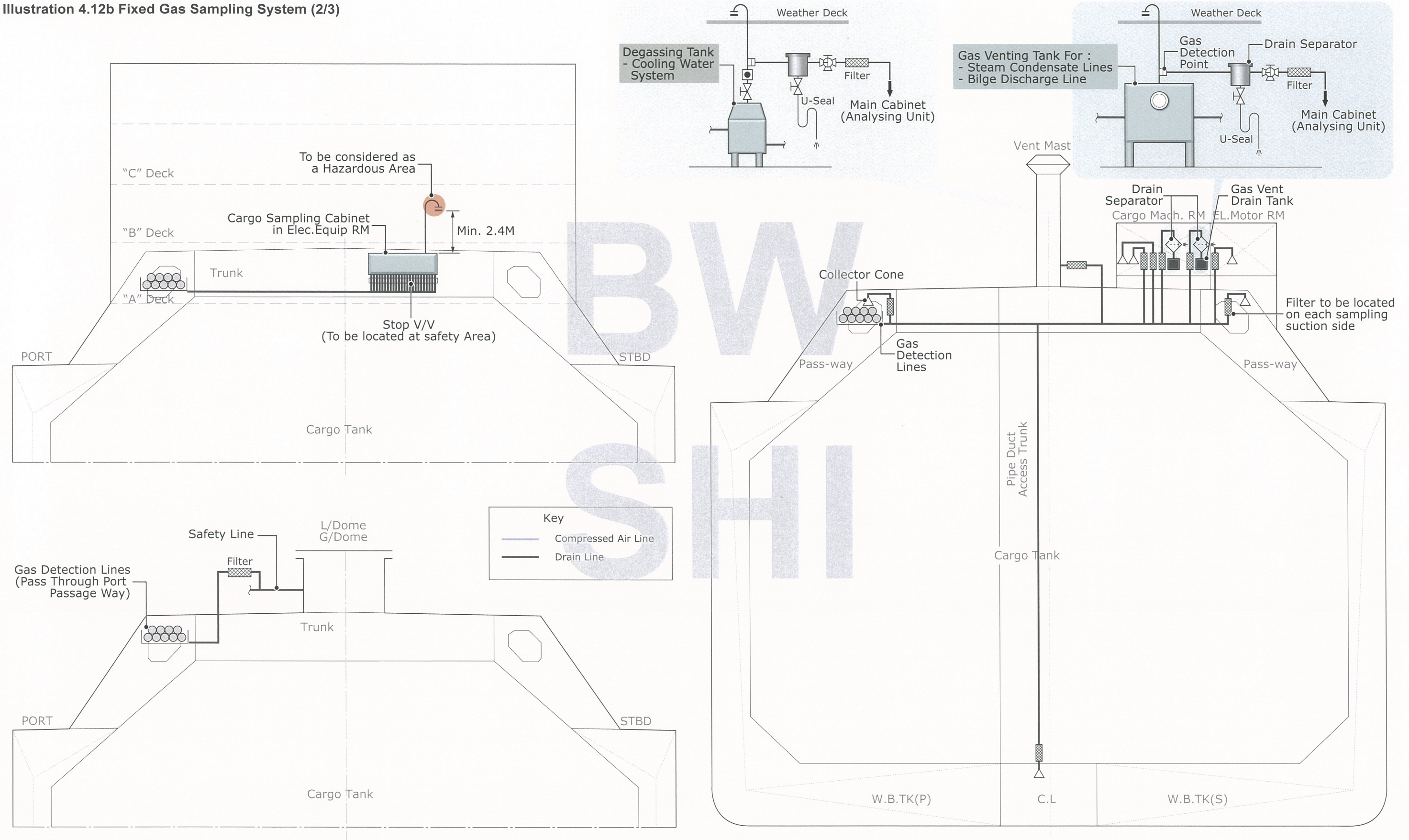


Illustration 4.12c Fixed Gas Sampling System for Regas (3/3)

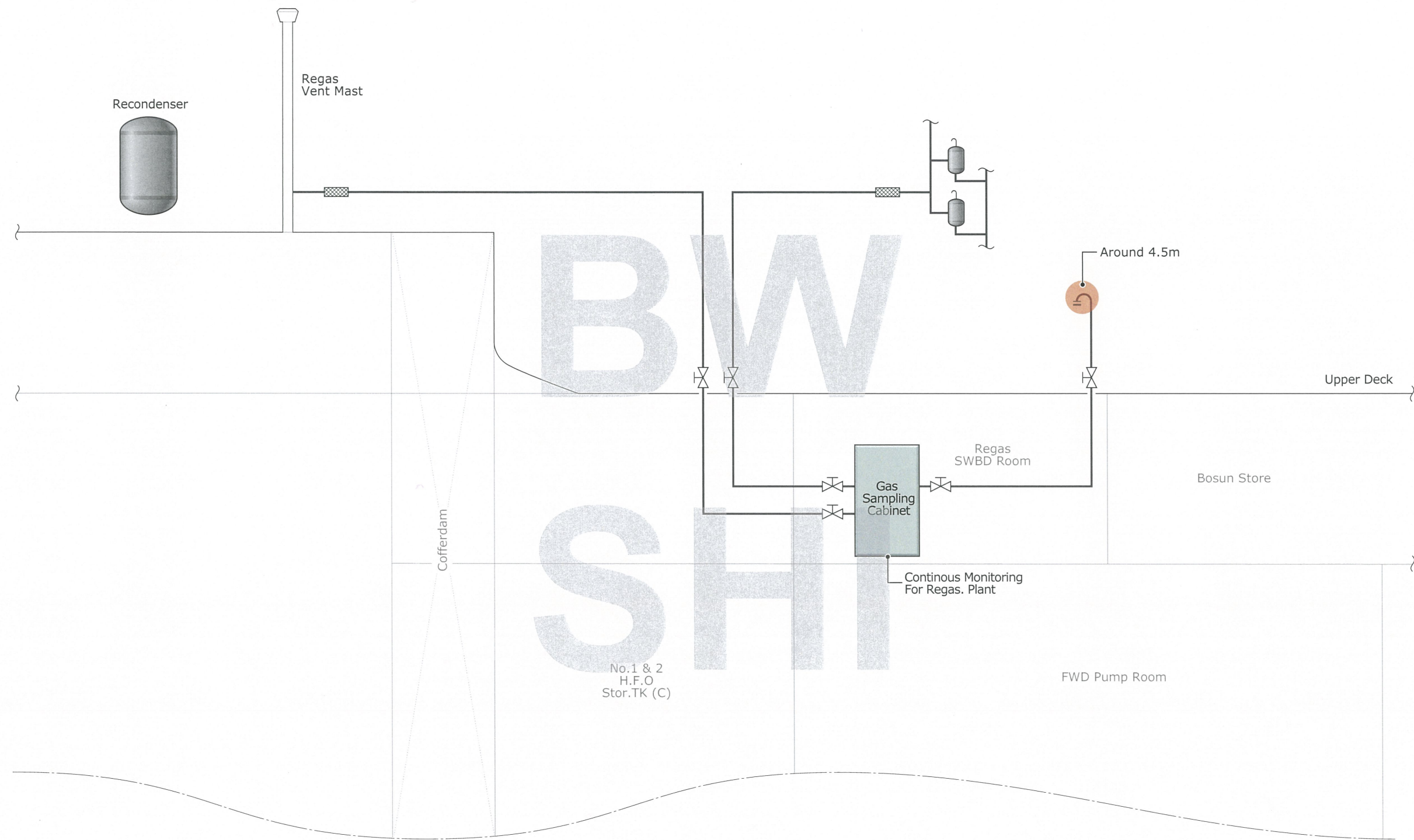
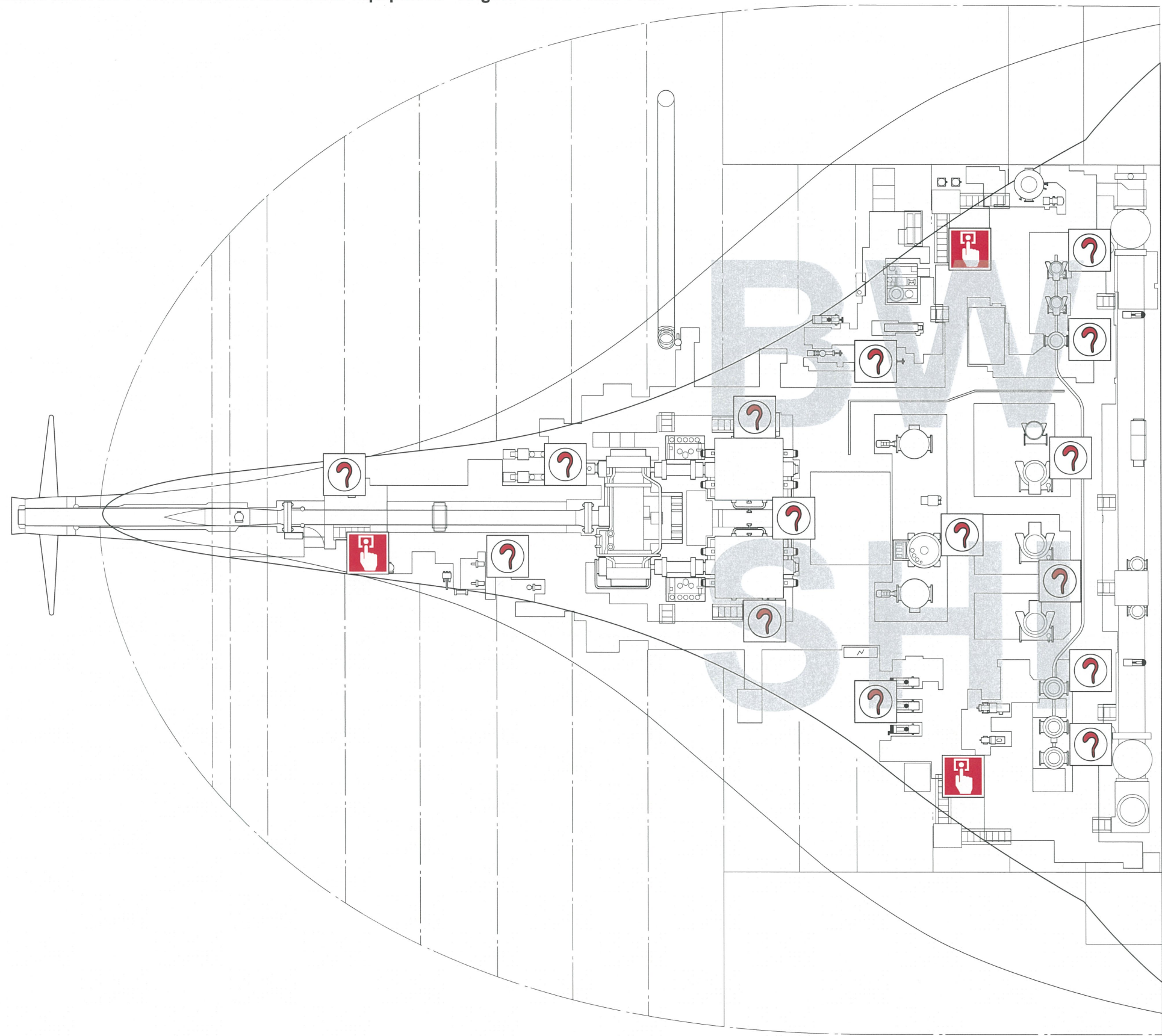



Illustration 8.9b Fire Detection System Symbols

Key	
	Fire Alarm Central Cabinet
	Fire Control / Repeater Panel
	Fire Repeater Panel
	Manually Operated Call Point
	Spaces or Group of Spaces Monitored by Heat Detector
	Spaces or Group of Spaces Monitored by Gas Detector
	Smoke Detector for Fire Alarm
	Smoke Detector for Water Mist Local Fire Fighting System
	Flame Detector for Fire Alarm
	Flame Detector for Water Mist Local Fire Fighting System
F.G.E	Electric Horn with Rating Light (Gen./Fire)


Illustration 8.9c Fire Detection and Alarm Equipment - Engine Room Floor Plan



Key

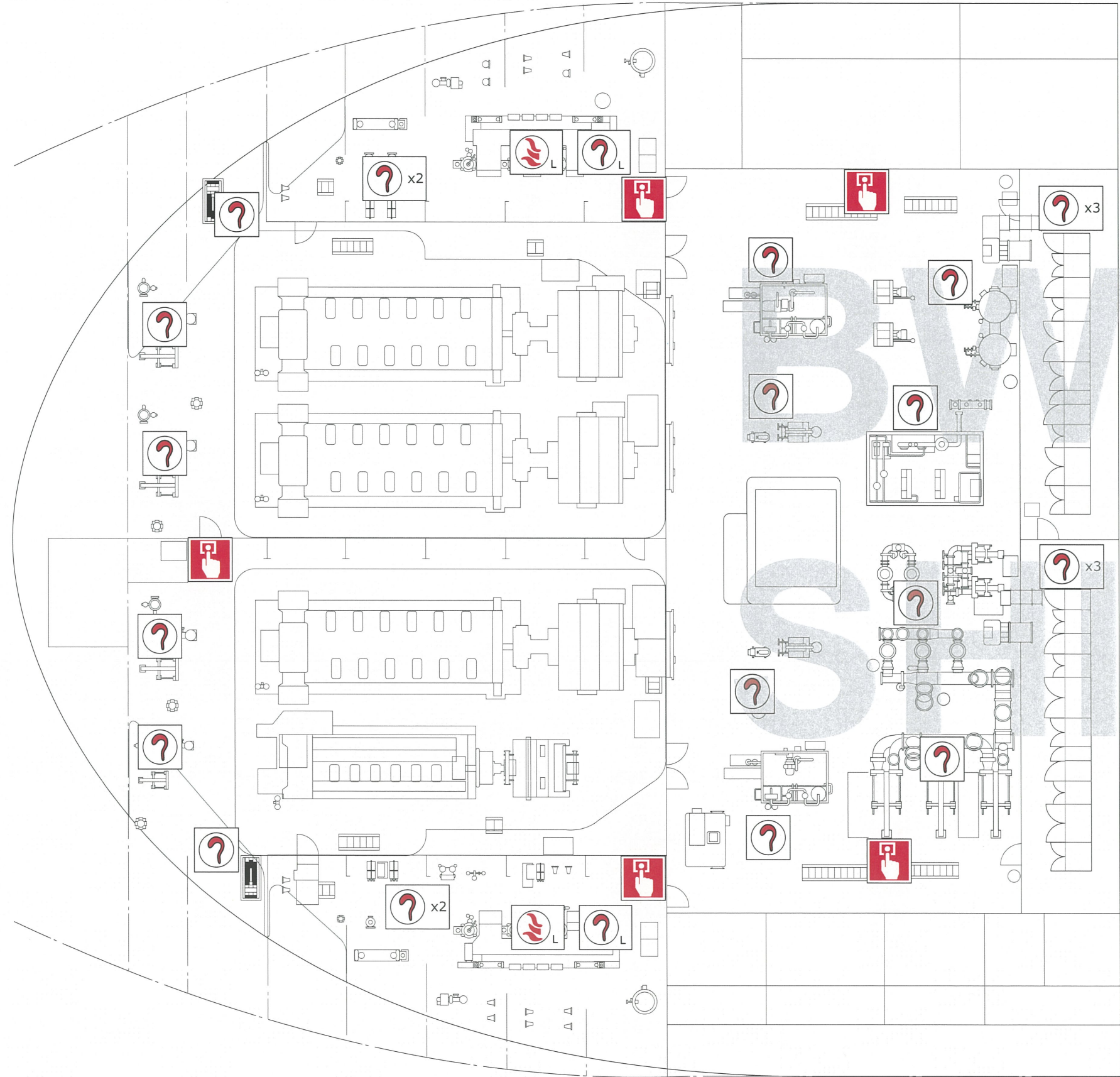


Manually Operated Call Point




Smoke Detector for Fire Alarm


Illustration 8.9d Fire Detection and Alarm Equipment - Engine Room 4th Deck




Key




Manually Operated Call Point



Smoke Detector for Fire Alarm



Smoke Detector for Water Mist Local Fire Fighting System

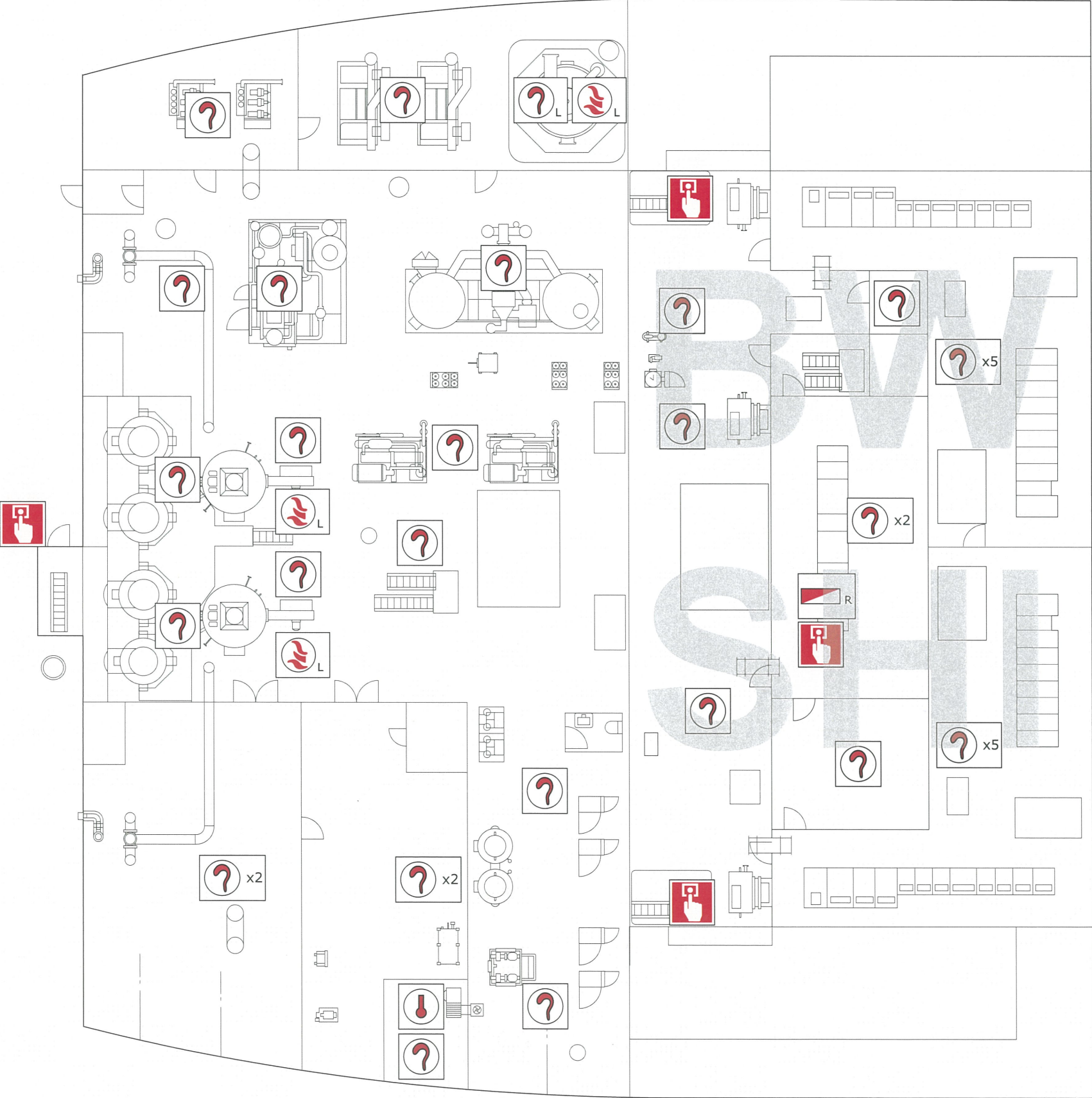


Flame Detector for Water Mist Local Fire Fighting System


Illustration 8.9e Fire Detection and Alarm Equipment - Engine Room 3rd Deck




Illustration 8.9f Fire Detection and Alarm Equipment - Engine Room 2nd Deck




Key




Manually Operated Call Point




Spaces or Group of Spaces Monitored by Heat Detector




Smoke Detector for Water Mist Local Fire Fighting System



Smoke Detector for Fire Alarm



Flame Detector for Water Mist Local Fire Fighting System



R Fire Repeater Panel

Illustration 8.9g Fire Detection and Alarm Equipment - Accommodation Upper Deck



Illustration 8.9h Fire Detection and Alarm Equipment - Cargo Machinery Room/Electric Motor Room



Illustration 8.9i Fire Detection and Alarm Equipment - A Deck



Illustration 8.9j Fire Detection and Alarm Equipment - B Deck

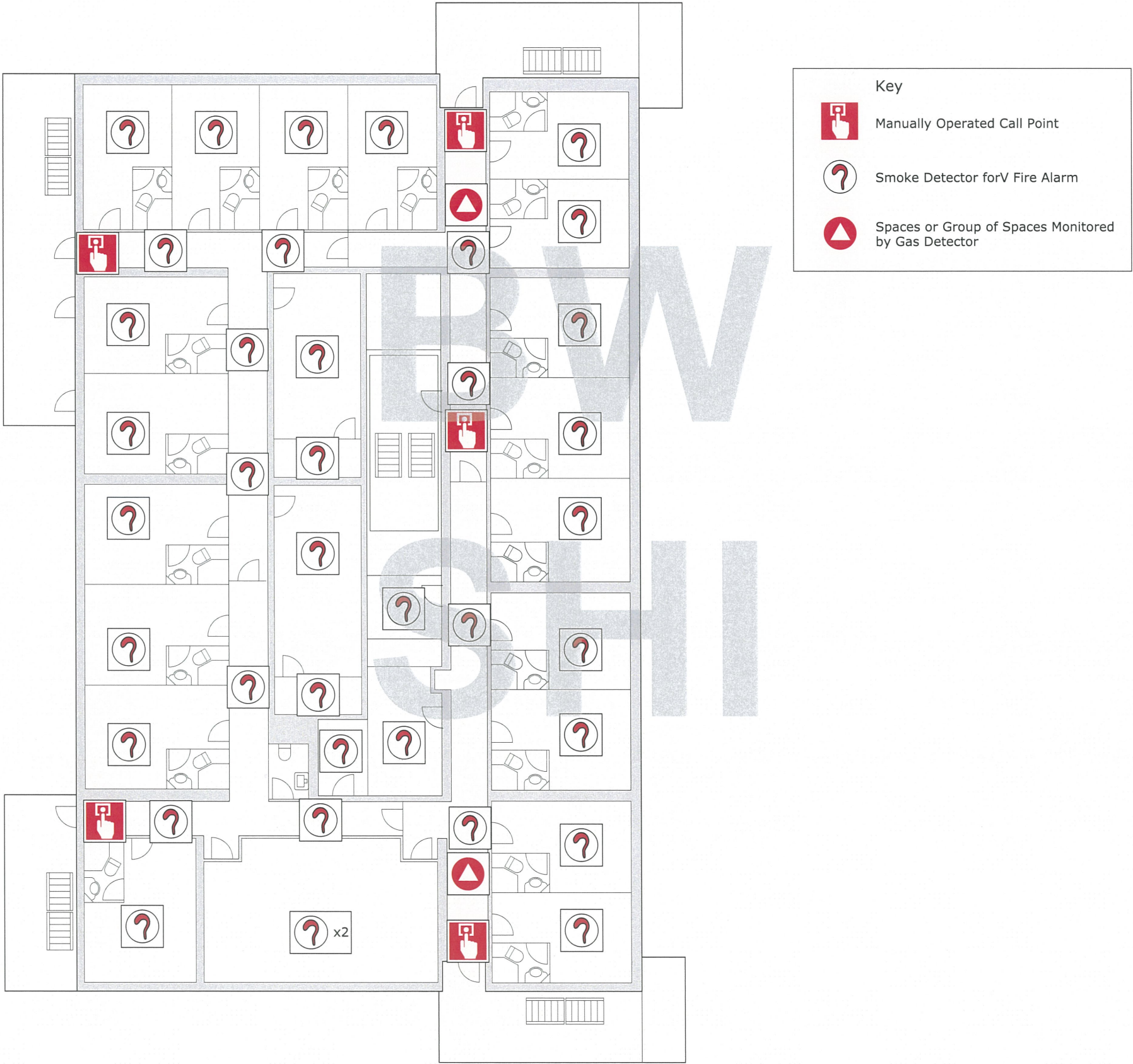


Illustration 8.9k Fire Detection and Alarm Equipment - C Deck

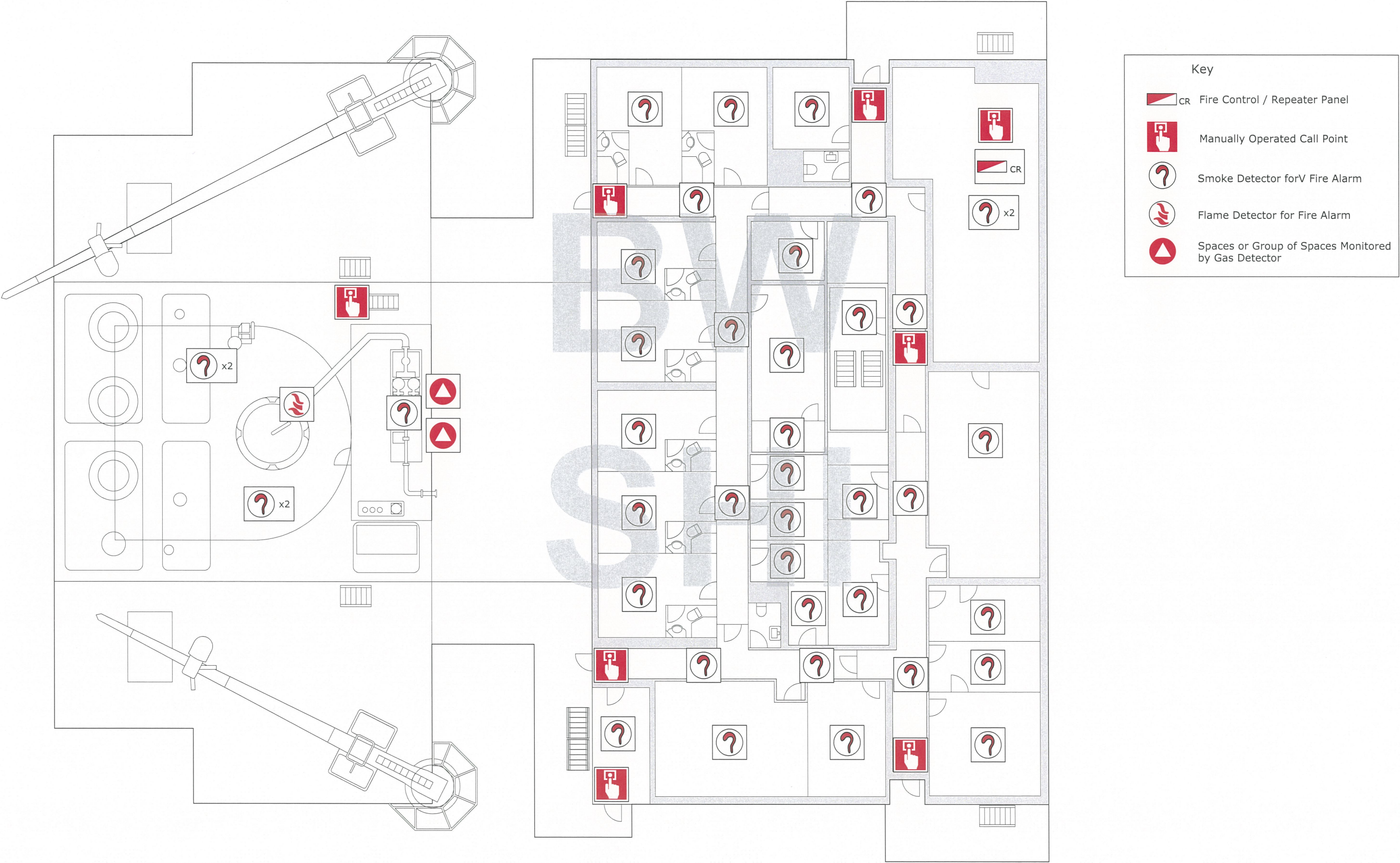
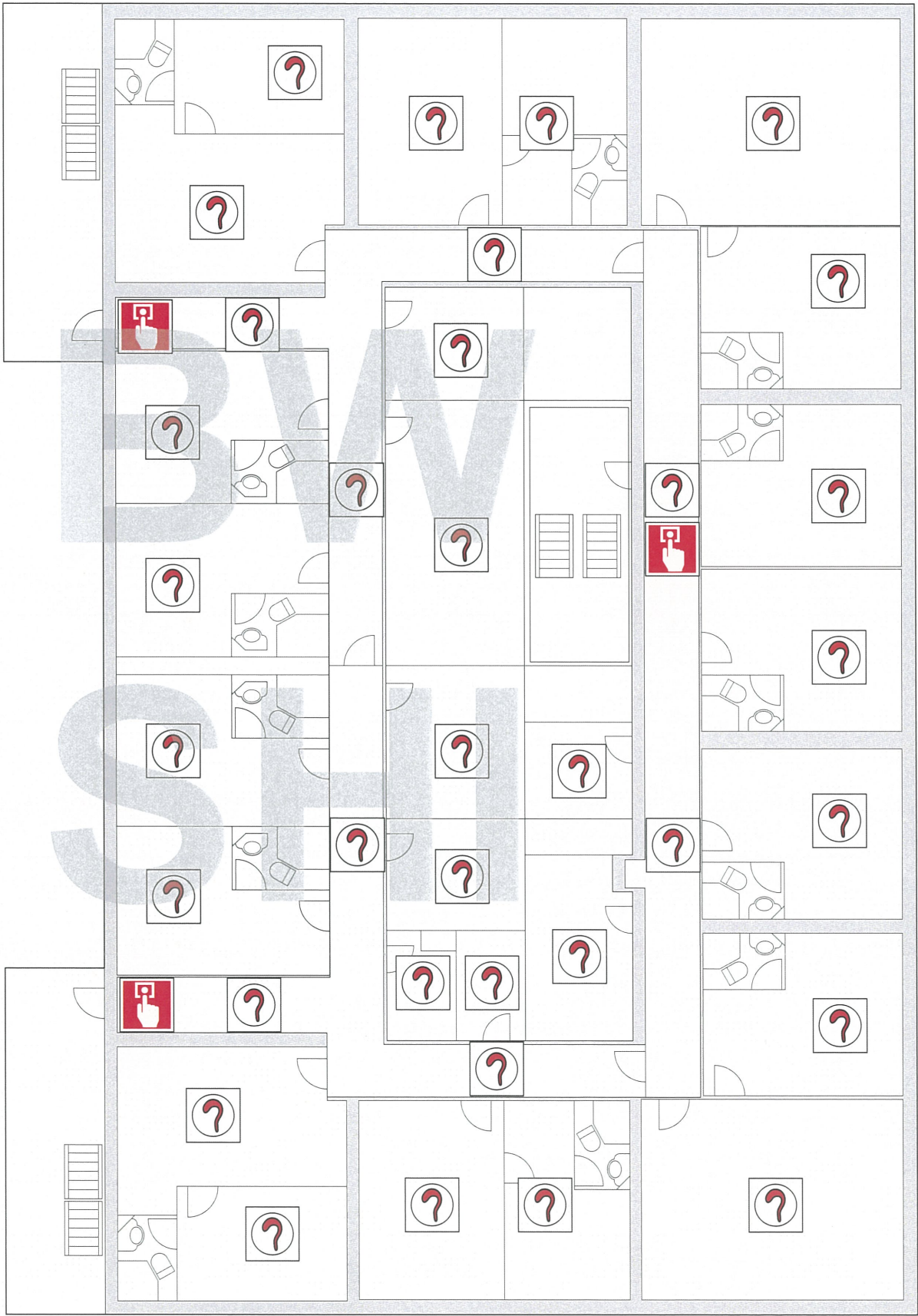
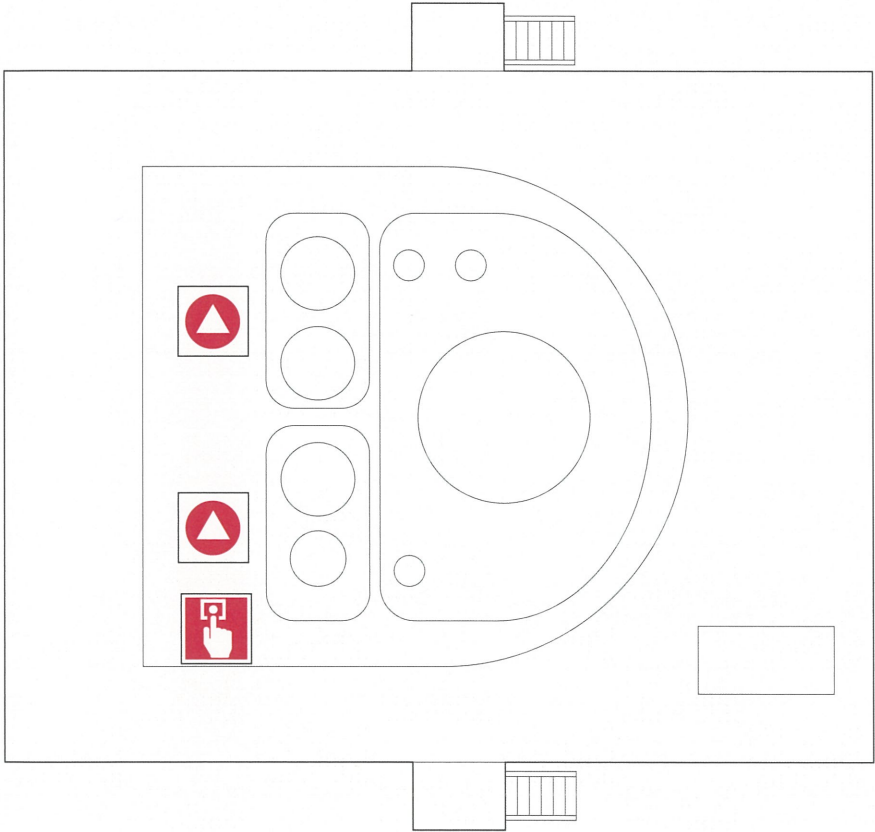


Illustration 8.9I Fire Detection and Alarm Equipment - D Deck



Key




-  Manually Operated Call Point
-  Smoke Detector forV Fire Alarm
-  Spaces or Group of Spaces Monitored by Gas Detector

Illustration 8.9m Fire Detection and Alarm Equipment - Navigation Bridge Deck

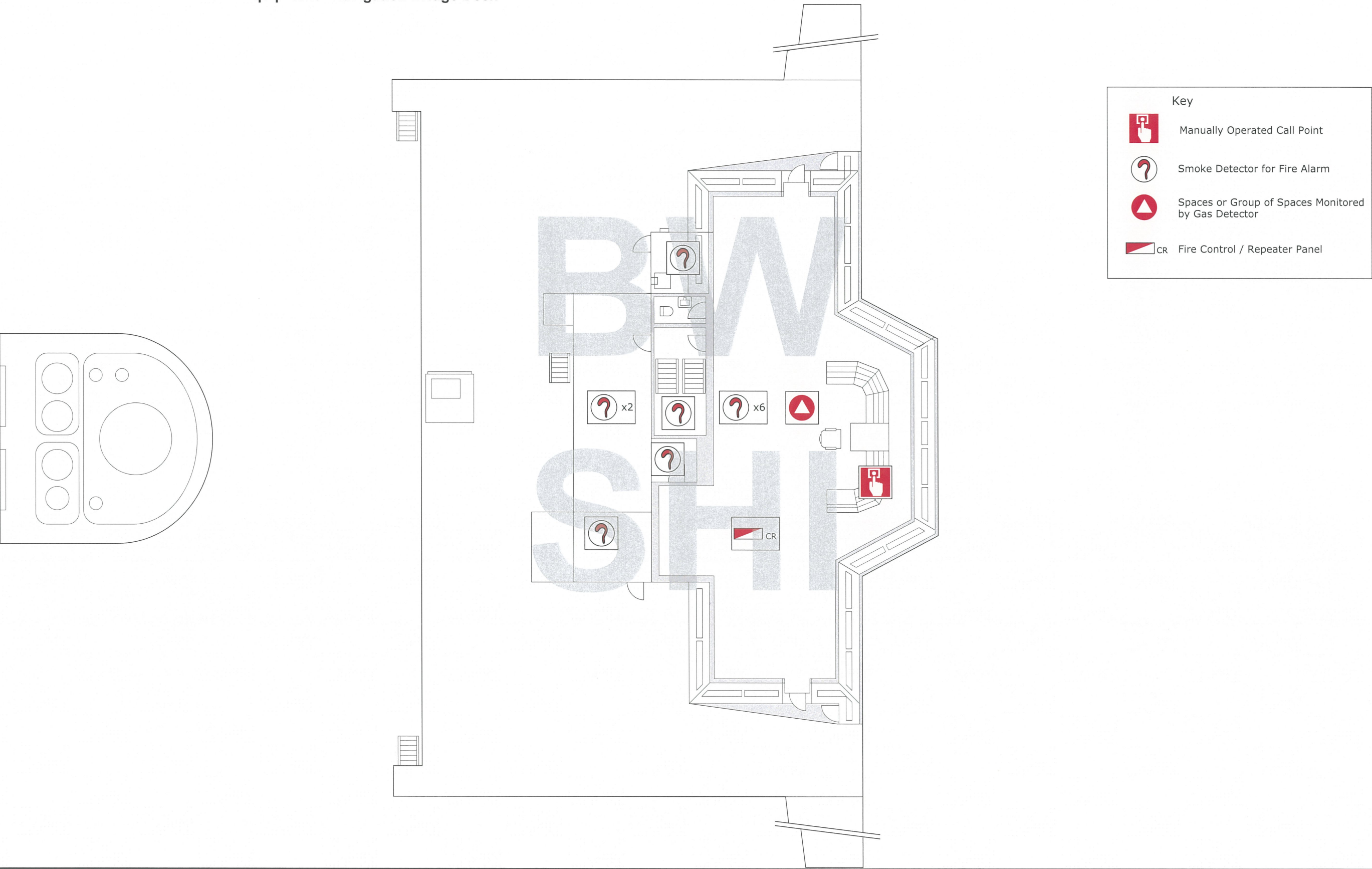


Illustration 8.9n Fire Detection and Alarm Equipment - Bosun Store

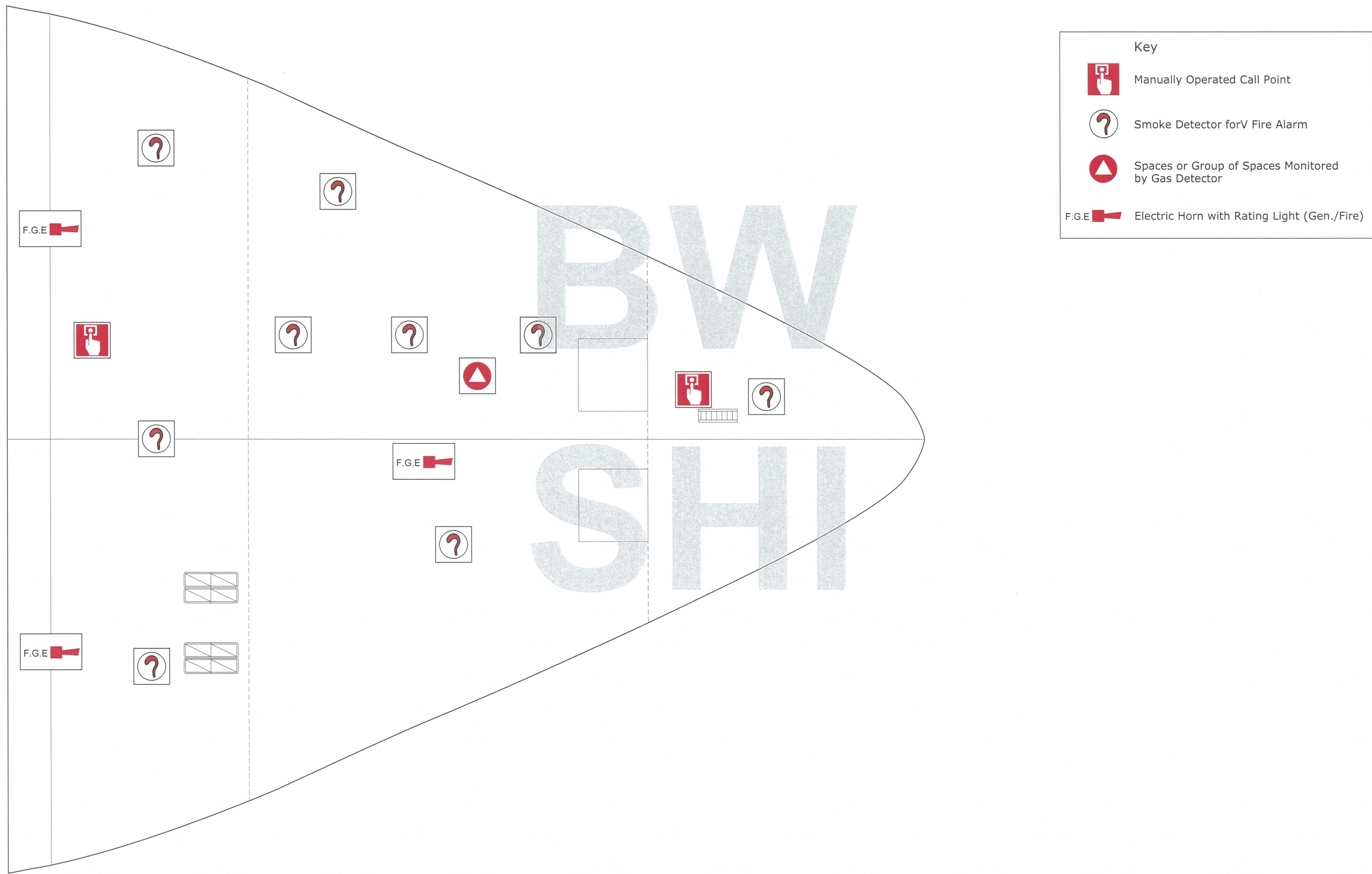
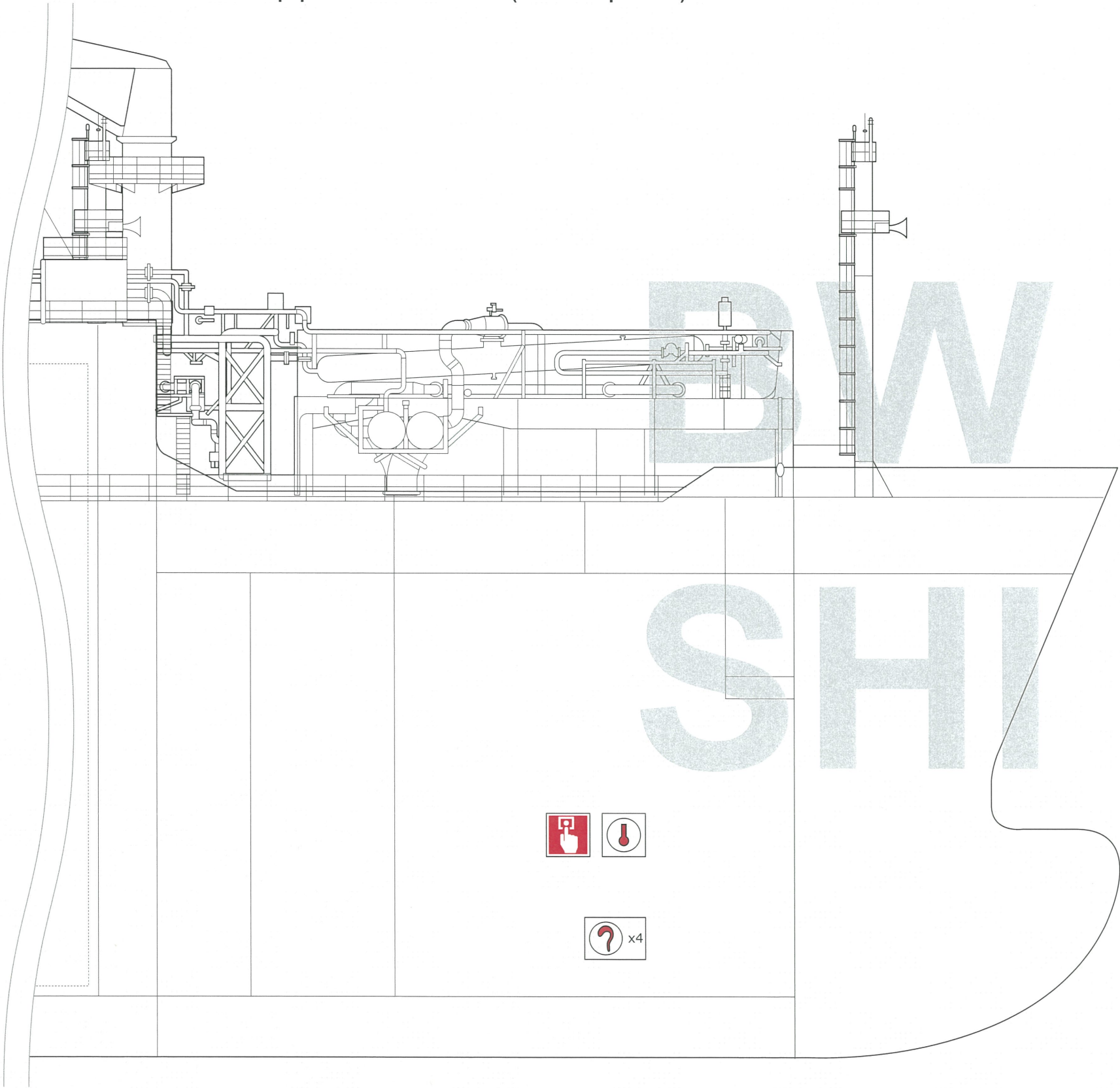




Illustration 8.9o Fire Detection and Alarm Equipment - Side Elevation (FWD Pump Room)




Key



Manually Operated Call Point



Spaces or Group of Spaces Monitored by Heat Detector



Smoke Detector forV Fire Alarm